

**Video:** Connect the remaining cables into the corresponding RGB (Red, Green, Blue) video output connections on the back of the converter box.

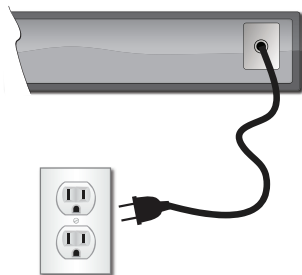
**Connect the other end of the component cable as follows:**

**Audio:** Connect the black tip with red band into the audio input connection marked "R" and connect the black tip with white band into the audio input connection marked "L" on the back of your TV.

**Video:** Connect the remaining cables on that end into the corresponding RGB (Red, Green, Blue) video input connections on the back of your TV.

## STEP 6

Connect the power supply cord into the back of the converter box, then plug the other end into an electrical outlet. Ensure a wall light switch does not control the outlet. If it does, set the switch to the "ON" position.



## STEP 7

Turn on the television with the TV remote. Press the Input or Source button. Depending on which cable you installed in Step 5, select the HDMI or Component video source on your TV.

## STEP 8

Make sure your RCN remote control has fresh batteries.

## STEP 9

Press the CBL button on the remote. The power light on the converter box will light up.

**Please Note:** In order for your installation to be successful, you must install ALL converter boxes in your home. Follow the previous steps for the other converter boxes before continuing to the next step.

**You are now ready to activate your RCN converter box.**

## STEP 10

To ensure proper account setup and optimum service, locate your RCN packing slip and follow the enclosed instructions.

## STEP 11

To utilize all the features of your remote control, please reference the included instruction sheet.

**You're all set. Start enjoying!**

If you have any questions with your installation, please go to [www.rcn.com/help](http://www.rcn.com/help) or call 1-866-TECH-RCN (832-4726).



# WELCOME TO RCN

## DVR BOX SELF INSTALL GUIDE

You are about to experience a whole new way to enjoy Digital TV.



1.800.RING.RCN | [rcn.com](http://rcn.com)

©2012 RCN Telecom Services, LLC.



# TO INSTALL

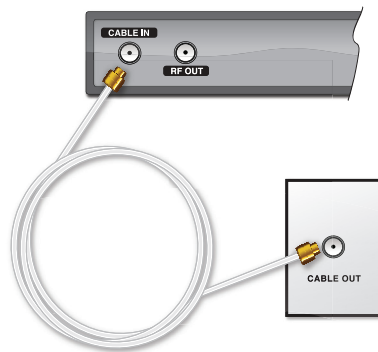
Get ready to experience TV on your time! RCN's HD/ DVR set-top box allows you to pause, rewind, and record live TV... up to two shows while watching a previously recorded show! Let's get started.

## STEP 1

### Connecting your converter box (A. Wall Outlet or B. Open Cable Wire)

#### A. Wall Outlet

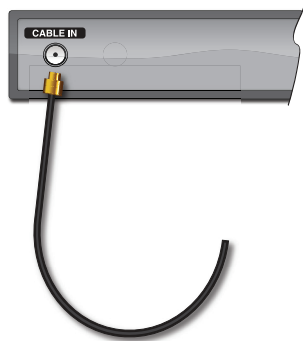
Connect one end of the coaxial cable to the wall outlet and the other end to the "Cable In" (or "RF IN") connection on the back of the RCN converter box.



#### B. Open Cable Wire

(This wire could be coming out of the floorboard, window, etc)

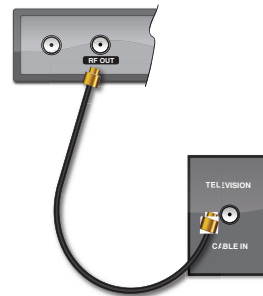
Connect the open cable to the "Cable In" (or "RF IN") connection on the back of the RCN converter box.



If you are connecting to a HD television, please proceed to step 5.

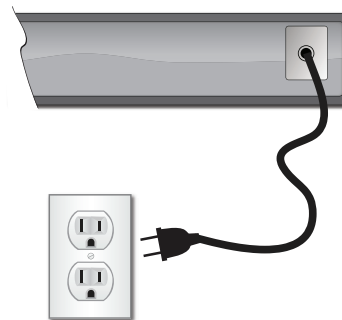
## STEP 2

Connect one end of the coaxial cable to the "To TV or RF OUT" connection on the back of the enclosed converter box and the other end into the "Cable In" connection on the back of your TV.



## STEP 3

Connect the power supply cord into the back of the converter box, then plug the other end into an electrical outlet. Ensure a wall light switch does not control the outlet. If it does, set the switch to the "ON" position.



## STEP 4

Turn on the television with the TV remote. Turn on channel 3 (channel 4 in Pennsylvania and Illinois areas).

Proceed to Step 8.

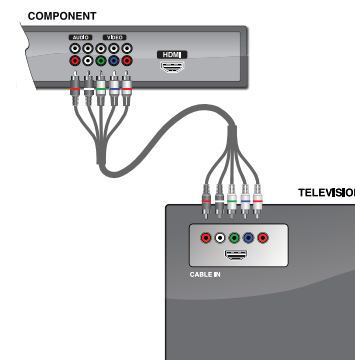
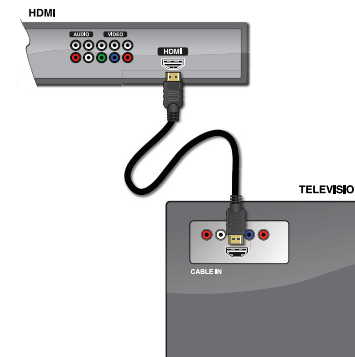
## STEP 5

(If you connected a Standard Definition television, please proceed to Step 8.)

### Connecting your Converter Box to TV (HDMI or Component cabling)

#### HDMI

Connect one end of the HDMI cable into the HDMI connection on the back of the converter box. Connect the other end of the HDMI cable into the HDMI connection on the back of your TV.



#### High Definition Component Cable

**Audio:** Connect the black tip with red band into the audio output connection marked "R" and connect the black tip with white band into the audio output connection marked "L" on the back of the converter box.